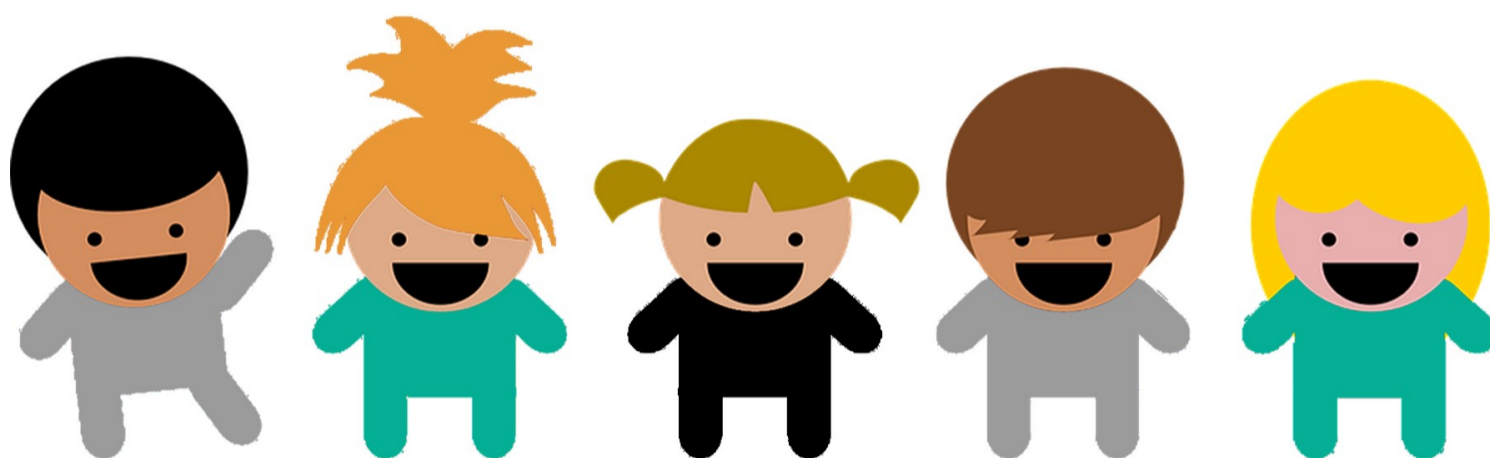


FOUNDATION APPRENTICESHIP IN CHILDREN'S CARE, PLAY, LEARNING & DEVELOPMENT



The new Children's Care, Play, Learning & Development (CCPLD) Apprenticeship framework is available from September 2019 and is aimed at early years practitioners, working with children aged 0-7.

The CCPLD framework consists of the following:

C&G Level 2 Qualification in Children's Care, Play, Learning & Development: Practice

WJEC Level 2 Qualification in Children's Care, Play, Learning & Development: Core Essential Communication Skills

Essential Application of Number Skills

(Further details overleaf)

Training is delivered in the workplace at convenient times and tailored to your organisation's needs. There will be elements of study required outside of scheduled visits.

Candidates have the option to complete the framework in Welsh, English or bilingually.

This scheme is funded by the Welsh Government and financed by the ESF, subject to meeting eligibility criteria and government funding availability.

This marketing information is available in Welsh and English

Contact us for more information at:

 simon.dignam@cadcentreuk.wales

 01248 670039

Foundation Apprenticeship in Children's Care, Play, Learning & Development

<p>Level 2 Children's Care, Play, Learning & Development: Practice</p> <p>To achieve the Level 2 Children's Care, Play, Learning and Development: Practice qualification learners must achieve a minimum of 35 credits in total:</p> <p>25 credits must be achieved from the Mandatory group</p> <p>A minimum of 3 credits must be achieved from Optional Group A</p> <p>The balance of 7 credits can be achieved from units in Optional Groups A, B or C</p> <p>Mandatory Group: All units to be completed</p> <p>200: Supporting core practice in children's care, play, learning and development</p> <p>201: Supporting play, learning, growth and development</p> <p>202: Supporting nutrition and hydration in early years</p> <p>203: Responding to signs of potential illness and infestation/infection</p> <p>Optional Group A: Minimum of 1 unit</p> <p>204: Supporting the care of 0-2 year olds</p> <p>205: Supporting the care of 2-3 year olds</p> <p>206: Working with 3-7 year olds</p> <p>Optional Group B & C: Average of 4 units (example— see qualification handbook for full list of available units)</p> <p>207: Supporting the acquisition of a new language through immersion</p> <p>310: Positive approaches to behaviour support in early years</p> <p>208: Supporting children living with diabetes mellitus</p> <p>210: Introduction to breathlessness and asthma in children</p>	<p>Level 2 Children's Care, Play, Learning & Development: Core</p> <p>The Level 2 Children's Care, Play, Learning and Development: Core qualification is a linear qualification. To achieve the qualification, learners must achieve the following five mandatory units:</p> <p>001: Principles and values of children's care, play, learning and development (0-19 years)</p> <p>002: Health, well-being, learning and development</p> <p>003: Professional practice as an early years and childcare worker</p> <p>004: Safeguarding children</p> <p>005: Health and safety in children's care, play, learning and development</p>
	<div data-bbox="877 1374 1062 1492" data-label="Image"> </div> <p>Essential Skills Wales</p> <p>Essential Skills are an important part of your qualification and aim to develop your literacy and numeracy. These skills are highly valued by employers.</p> <p>Communication</p> <p>Aims at developing and demonstrating skills in:</p> <ul style="list-style-type: none"> Speaking and Listening Reading Writing <p>To achieve the Essential Communication Skills qualification, candidates are required to demonstrate their skills through both a controlled task and confirmatory test.</p> <p>Application of Number Skills</p> <p>Aims at developing and demonstrating skills in:</p> <ul style="list-style-type: none"> Understanding Numerical Data Carrying out Calculations Interpreting and Presenting Results and Findings <p>To achieve the Essential Application of Number Skills qualification, candidates are required to demonstrate their skills through both a controlled task and confirmatory test.</p>